



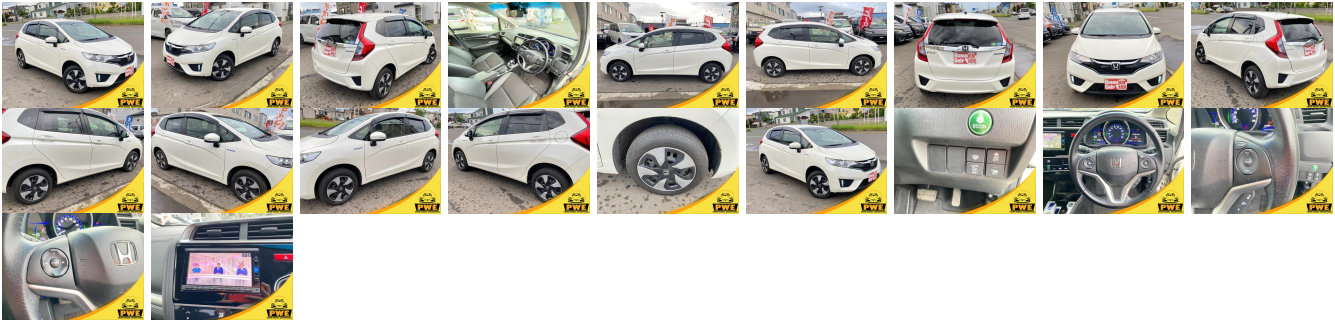
## Vehicle Information

PWE 6076

HONDA

**First Registration Year:** 2016-08  
**Manufacture Year:** 2016-08

|                     |                      |                    |             |                         |           |                  |  |
|---------------------|----------------------|--------------------|-------------|-------------------------|-----------|------------------|--|
| <b>Model:</b>       | FIT HYBRID L PACKAGE | <b>Chassis No:</b> | GP6-330**** | <b>Transmission:</b>    | Automatic | <b>Exterior:</b> |  |
| <b>Grade:</b>       | 4.0                  | <b>Engine:</b>     |             | <b>Mileage:</b>         | 61,000    | <b>Interior:</b> |  |
| <b>Fuel:</b>        | Hybrid               | <b>Seats:</b>      | 5           | <b>Engine Capacity:</b> | 1,500     |                  |  |
| <b>Drive Train:</b> |                      |                    |             | <b>Color:</b>           | White     |                  |  |



## Vehicle Options:

|                  |                        |                |              |
|------------------|------------------------|----------------|--------------|
| Pwr Steering     | Pwr Wind               | Pwr Mirrors    | Center Lock  |
| Air Cond         | Reverse Camera         | Pwr Slide Door | Easy Closer  |
| Cruise Control   | ABS                    | Air Bag        | Fog Lamps    |
| HID Head Lamps   | LED Head Lamps         | Spare Key      | Remote Key   |
| Push Start       | Seat Heater            | Pwr Seat       | Leather Seat |
| Floor Mat        | Sun Roof               | Alloy Wheels   | Grill Guard  |
| Rear Wiper       | Rear Spoiler           | Stereo         | Navi/TV      |
| Car CD           | Car MD                 | AUX            | Spare Tire   |
| Spare Tire Case  | Puncture Repairing Kit | Tool           | Jack         |
| Operators Manual | Maint. Record          |                |              |

**\$4,600**