



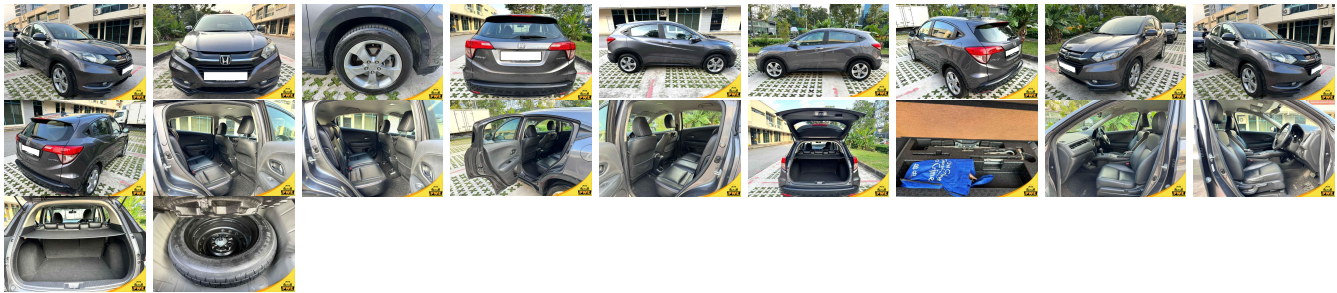
Vehicle Information

HONDA

First Registration Year: 2015-05
Manufacture Year: 2015-05

PWE 6098

Model: HR-V **Chassis No:** MRHRU1830FP001 **Transmission:** Automatic **Exterior:**
Grade: 4.0 **Engine:** **Mileage:** 48,294 **Interior:**
Fuel: Petrol **Seats:** 5 **Engine Capacity:** 1,500
Drive Train: 2WD **Color:** GRAY



Vehicle Options:

| | | | |
|------------------|------------------------|----------------|--------------|
| Pwr Steering | Pwr Wind | Pwr Mirrors | Center Lock |
| Air Cond | Reverse Camera | Pwr Slide Door | Easy Closer |
| Cruise Control | ABS | Air Bag | Fog Lamps |
| HID Head Lamps | LED Head Lamps | Spare Key | Remote Key |
| Push Start | Seat Heater | Pwr Seat | Leather Seat |
| Floor Mat | Sun Roof | Alloy Wheels | Grill Guard |
| Rear Wiper | Rear Spoiler | Stereo | Navi/TV |
| Car CD | Car MD | AUX | Spare Tire |
| Spare Tire Case | Puncture Repairing Kit | Tool | Jack |
| Operators Manual | Maint. Record | | |

\$8,000