



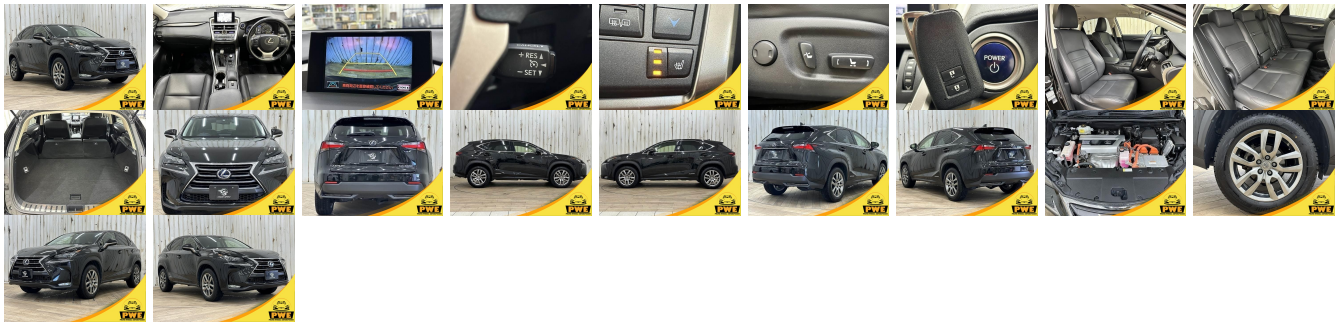
Vehicle Information

LEXUS

First Registration Year: 2015-08
Manufacture Year: 2015-08

PWE 1303

Model: NX NX300H I PACKAGE
Chassis No: AYZ10-102****
Transmission: Automatic
Exterior:
Grade: 4.5
Engine:
Mileage: 90,000
Interior:
Fuel: Hybrid
Seats: 5
Engine Capacity: 2,500
Drive Train: 2WD
Color: BLACK



Vehicle Options:

Pwr Steering	Pwr Wind	Pwr Mirrors	Center Lock
Air Cond	Reverse Camera	Pwr Slide Door	Easy Closer
Cruise Control	ABS	Air Bag	Fog Lamps
HID Head Lamps	LED Head Lamps	Spare Key	Remote Key
Push Start	Seat Heater	Pwr Seat	Leather Seat
Floor Mat	Sun Roof	Alloy Wheels	Grill Guard
Rear Wiper	Rear Spoiler	Stereo	Navi/TV
Car CD	Car MD	AUX	Spare Tire
Spare Tire Case	Puncture Repairing Kit	Tool	Jack
Operators Manual	Maint. Record		

\$20,000